

RETAIL INDUSTRY

RFID tag mandates and how they can serve you.

Using item-level RFID tags in retail is quickly becoming standard across the industry. The motivations for big companies like Walmart, Target, Macy's, Nordstrom, Nike, and so many others to enact these mandates are centered around loss prevention and increasing customer satisfaction by ensuring product availability and improving order fulfillment.

But that is really just the tip of the iceberg. RFID technology improves performance and provides enterprise-wide efficiencies leading to increased profitability and clear ROIs.

The mandates being enforced, however, only require the tagging of products. Imagine what you could do if you were able to interpret the data from your products for your own benefit.

How can RTI help?

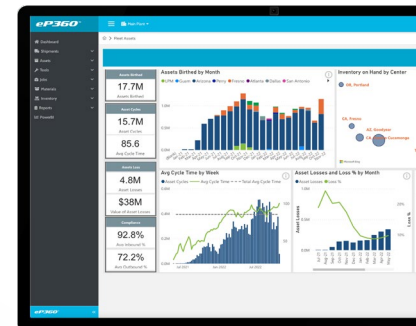
Real Time Intelligence's patented software solution, eP360, collects and digests asset data using the mandated RFID technology while performing everyday functions.

Dynamic information is displayed in real time, pinpointing problem areas and opportunities for improvement.

No more wasting time mining data lakes or sifting through outdated data. Get accurate forecasts around your assets with real-time data and prescriptive insights.

INSIGHTS GAINED

- Real-time visibility: accurate inventory location and quantities
- Automate outbound shipment verification
- Automate advance shipping notification (ASN)
- Associate assets to packaging
- Obtain advanced data analytics and integration (chain of custody, accountability, etc.)
- Determine where and when an item has been sold or disappeared within the supply chain
- Trace products for recalls
- Improve workflows
- Discourage internal shrink
- Enable faster delivery
- Reduce checkout wait times
- Provide customers information on product's processes, materials, and lifecycle, as well as how to care for and recycle the product



3 REASONS TO CHOOSE eP360



1

The agile nature of our solution fills the gaps between existing operational systems, no matter the size—a modernized solution tailored to your needs and existing infrastructure.



2

eP360 is designed to encourage collaboration, accountability, and visibility throughout your supply and value chains.

Network trading partners are working toward the same goals, sharing in the value and savings, and mutually benefiting from the depth of visibility and control.



3

RTI's solution is quick to deploy and even easier to manage and integrate with your current systems and processes.

Other Key Features

- Easy-to-use interface
- Secure cloud platform
- Secure user access
- Scorecards allow companies to see suppliers activity
- Open API
- Data can be made available to third parties for auditing
- Mobile application to easily monitor assets from anywhere
- Tags provide a unique identification number for each asset
- Conforms to GS1 and EPCIS standards

Where will you see ROI?

18%

**INCREASE IN SALES
FROM REDUCING
OUT-OF-STOCK ITEMS**

- Minimize loss of assets by tracking throughout the supply chain
- Shipment verification to help alleviate chargebacks due to shipping discrepancies, overages, and mis-packs
- Reduced theft
- Decrease labor spent locating and rerouting items
- Remove human effort and error by automating manual excel tracking entries to a secure cloud structure
- Reprioritize labor due to increased efficiencies

Contact us today to see how much eP360's visibility can save you!
info.rtintel.com/retail